

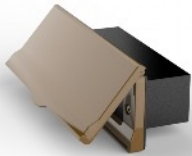
LS23 Cambridge

The Cambridge is a modern style letterbox designed to fit into existing or built into new brick walls, piers or wood fences and gates. The body can be made to suit all depth piers or walls and with a range of 6 different access chutes, the Cambridge is suitable for just about any application.

Made entirely in the U.K. the Cambridge is supplied with an access chute and elegant outward opening letter plate. All castings are made from solid aluminium which are phosphate coated prior to being powder coated ensuring it's great looks for many years. The LM6 letter plate is fitted with rubber seals to prevent leaking and can be fitted with an optional draught excluder.



Chutes



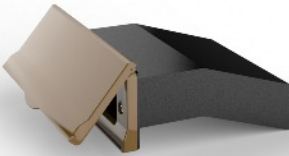
Short single chute

Suitable for wooden gates and fences from 25mm to 75mm



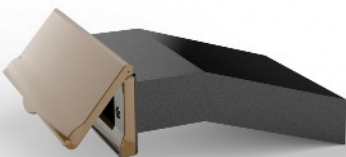
Standard single chute

Designed for single brick walls or brick piers. Suitable for brick thickness from 100mm to 135mm



Double stepped chute

This chute is designed to be fitted into a double brick wall as the wall is being built. Will fit wall depths from 195mm to 245mm



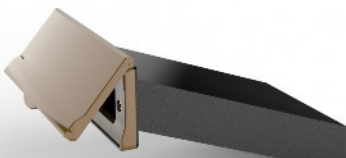
Cavity stepped chute

Designed to be fitted into a cavity or extra deep brick walls as the wall is being built. Suitable for walls from 285mm to 335mm



Double sloped chute

Designed for retro-fitting into an existing double wall. Suitable for wall depths 195mm to 245mm



Cavity sloped chute

This chute is designed to be retro-fitted into an existing wall with a depth between 285mm and 335mm

Letter plate finishes



Gloss black



Antique copper



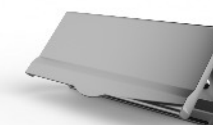
Grey



Textured black



Gold



Silver